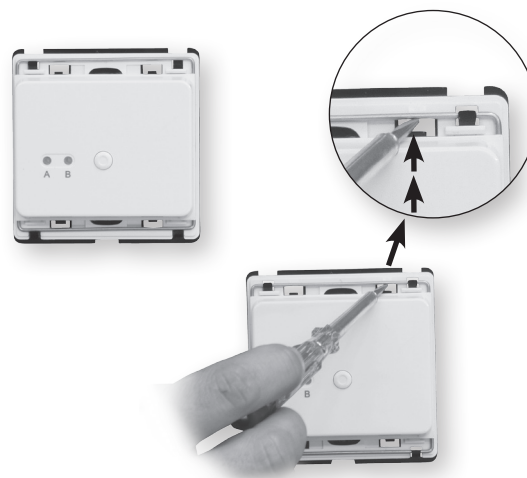


Mounting Steps

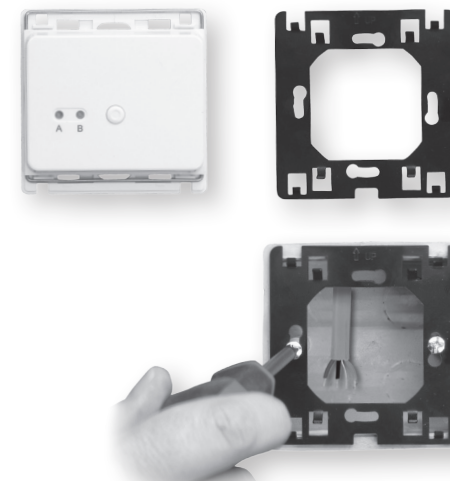
1: Release the front cover by inserting a screwdriver into bottom channel and twisting.



2: To release backing plate, slide wire retaining clip upwards.



3: Mount the backing plate in the wall socket using a screwdriver and screws supplied.

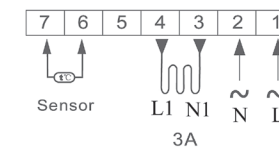


4: After connecting the receiver as per wiring diagram (see diagram)*, mount the thermostat on to the backing plate and push down wire retaining clip, remount the frame.

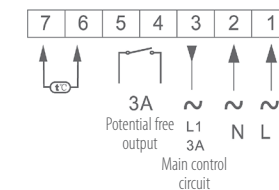


Wiring Diagram

E8.413RF



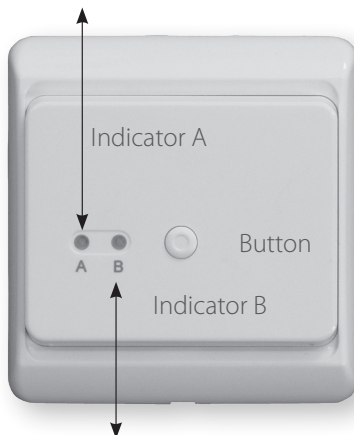
E8.423RF



*All wiring must be completed by a qualified professional in line with current regulations

Description of work state

Red Power
 Red Flashing Receiving Signal
 Green Flashing Code Pairing State

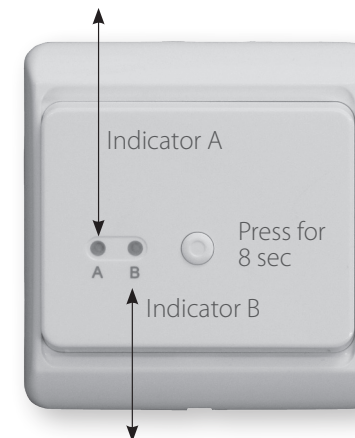


Green Calling for heat
 Red Limitation protective
 Red flashing Sensor ERR
 Green flashing Selected the limitation value

The indicator A is red when power is on
 The indicator A is red and flashing when receiving the wireless signal
 The indicator A is green and flashing when in code pairing mode
 The indicator B is green when calling for heat
 The indicator B is red when set to external limitation protection
 The indicator B red flashing shows a sensor error
 The indicator B green flashing shows entering the external limitation value select

Limitation value select (for external probe (if used))

Green external limited at 30°C
 Red external limited at 40°C
 Yellow external limited at 55°C
 None external limited closed



Green flashing Entering limitation value selected

Press the button for 8 seconds until the indicator B flashes green, the receiver is now in external probe limitation setting mode.

Press the button softly to cycle between the following four states.

Indicator A - green shows external limited at 30°C

Indicator A - red shows external limited at 40°C

Indicator A - yellow shows external limited in 55°C

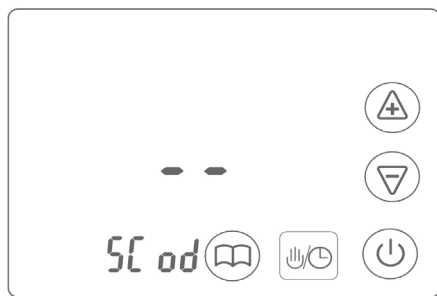
Indicator A - without light shows no external limitation set.

The receiver will save current setting automatically when nothing is pressed for 8 seconds and will quit the limitation setting mode.

2

Code pairing method

On Thermostat (E8.2RF) enter the advanced settings by first switch off thermostat by pressing then hold while switching thermostat back on . Next Press 4 times until the following is displayed.



On Receiver press the button for 4 secs then release, indicator A will flash green , the receiver is now ready to be code matched.

(NOTE: Indicator light will go out after 30 seconds of inactivity and process will need repeating)

On thermostat press and will flash 3 times and then go out, the indicator light A will turn back to red indicating that code match has been successful.

3

Selection Table

Model	Current	Output Type
E8.413RF	3A	One receiver, built-in & floor sensor
E8.423RF	3A	One receiver, built-in & floor sensor with potential free output

Parameters

Voltage : AC230V	Factory Setting : 30°C
Current : Max 3A	Limitation Switch Differential : -2°C
Wireless Frequency Output: 433Mhz	Ambient Temperature : -5~50°C
Effective Transmission Distance: 200m empty space	Protective Housing: Ip20
External Limatiation Valve : 30°C,40°C and 50°C (if external probe is fitted)	Housing Material: Anti-Flammable PC

Your notes:

.....

.....

.....

.....

.....

.....

.....

.....

.....

.....

Your Notes:

4

Tech support opening hours are subject to change - please visit our website for the latest information